

Application Overview

Using two 4112 models back-to-back a private hot line can be created. These can be found in use as courtesy phones at ATM's, information kiosks, emergency assistance pedestals, etc. In this operation, when one handset is picked-up, the far immediately begins ringing. When the far end handset is picked-up the speech path is completed.

The modem is connected to the SmartNode through its Ethernet interface. Hence any LAN/IP network and WAN/VPN connection is supported.

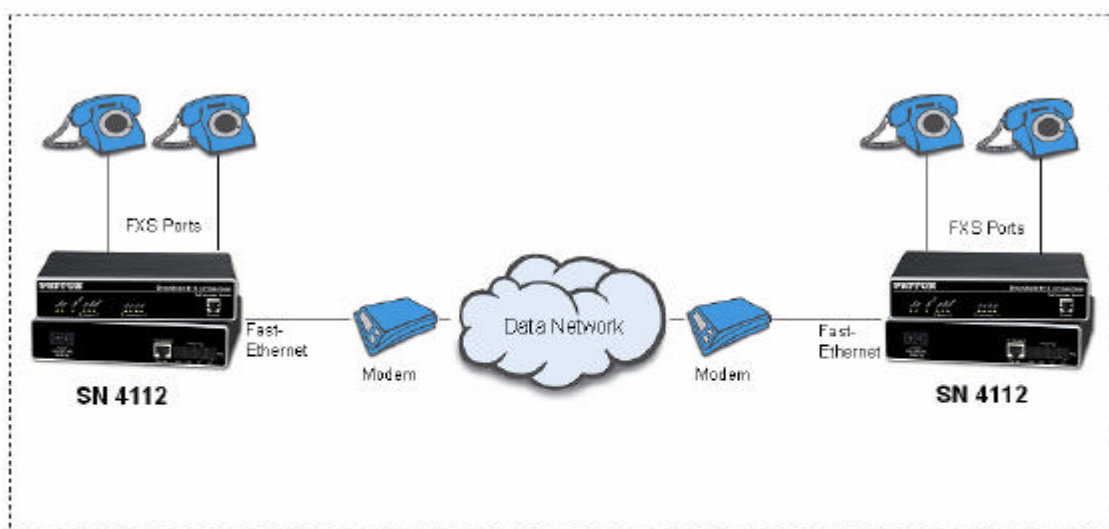


Figure 1: Schematic diagram of the example network

Lift the handset of a phone, all free phones at the remote side will ring. In this application the distribution group service is used to ring all phones simultaneously. If you are looking for a port-to-port relation please refer to the FXS-FXO line extension.

Figure 2 displays the details of the network, i.e. IP addresses and the SmartNode ports connected to the network.



Figure 2: Detailed schematics of the complete network

Note that this Configuration Note provides a basic setup which is intended to get you started quickly and make a first call. In some cases the minor adaptations described hereafter will be sufficient for your network. However, the SmartNode has many additional configuration options which allow to fit the product in various network scenarios. Please consult the SmartWare Software Configuration Guide for the complete configuration documentation.

How To Adapt To Your Network

The configuration file is available as an ASCII file (.cfg) file. You can edit the configuration file with any text editor (MS Word, Wordpad). Save changed files in text (.txt) format.

The configuration files contains comments (lines with a leading #) with instructions where and how to change the parameters which may need to be adapted to your network. Please replace the variables to valid parameters without brackets, e.g. <IF_IP_LAN> → 192.168.1.1

The only parameters, which you need to adapt for your network are the IP addresses. Note that the configurations of the local and remote unit must “point at each other” using the remote command. In other words the “remote ip” on each H.323 interface of the local SmartNode must be set to the ipaddress of interface IF_IP_WAN of the remote SmartNode and vice versa.

For instructions on how to download the configuration using a TFTP server to the SmartNode please consult the **Quick Start Guide**.

Note: Please follow the instructions in the Quick Start guide **exactly - step by step** to insure that the configuration is activated correctly!

Configuration File

sn4110_plar.cfg

Contacting Patton

If you have any questions please feel free to contact Patton's Technical Support:

- E-mail support—e-mail sent to support@patton.com will be answered within 1 business day
- Telephone support—standard telephone support is available five days a week—from 8:00 am to 5:00 pm EST (1300 to 2200 UTC)—by calling +1 (301) 975-1007

Limitation of Liability

Information in this document is subject to change without notice and does not represent a commitment on the part of Patton Electronics Company (Patton). Under no circumstance, including Patton's negligence, shall Patton be liable for any incidental, special, or consequential damages, including lost profits, that result from the use or inability to use the product or related documentation, even if Patton has been advised of the possibility of such damage. Some jurisdictions do not allow the limitation or exclusion of liability for incidental or consequential damages, so the above may not apply to you. In no event shall Patton's total liability to you for damages, losses, and causes of action exceed the amount paid by you for the Patton product.

Date Created

November 30, 2004

Last Updated

February 25, 2005



7622 Rickenbacker Drive
Gaithersburg, MD 20879
Tel: +1 301.975.1000
Fax: +1 301.869.9293
07MDSNQ0S-TN1